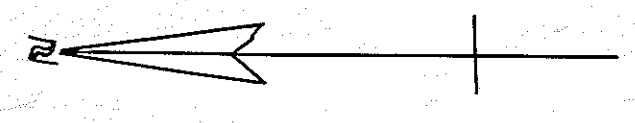


B



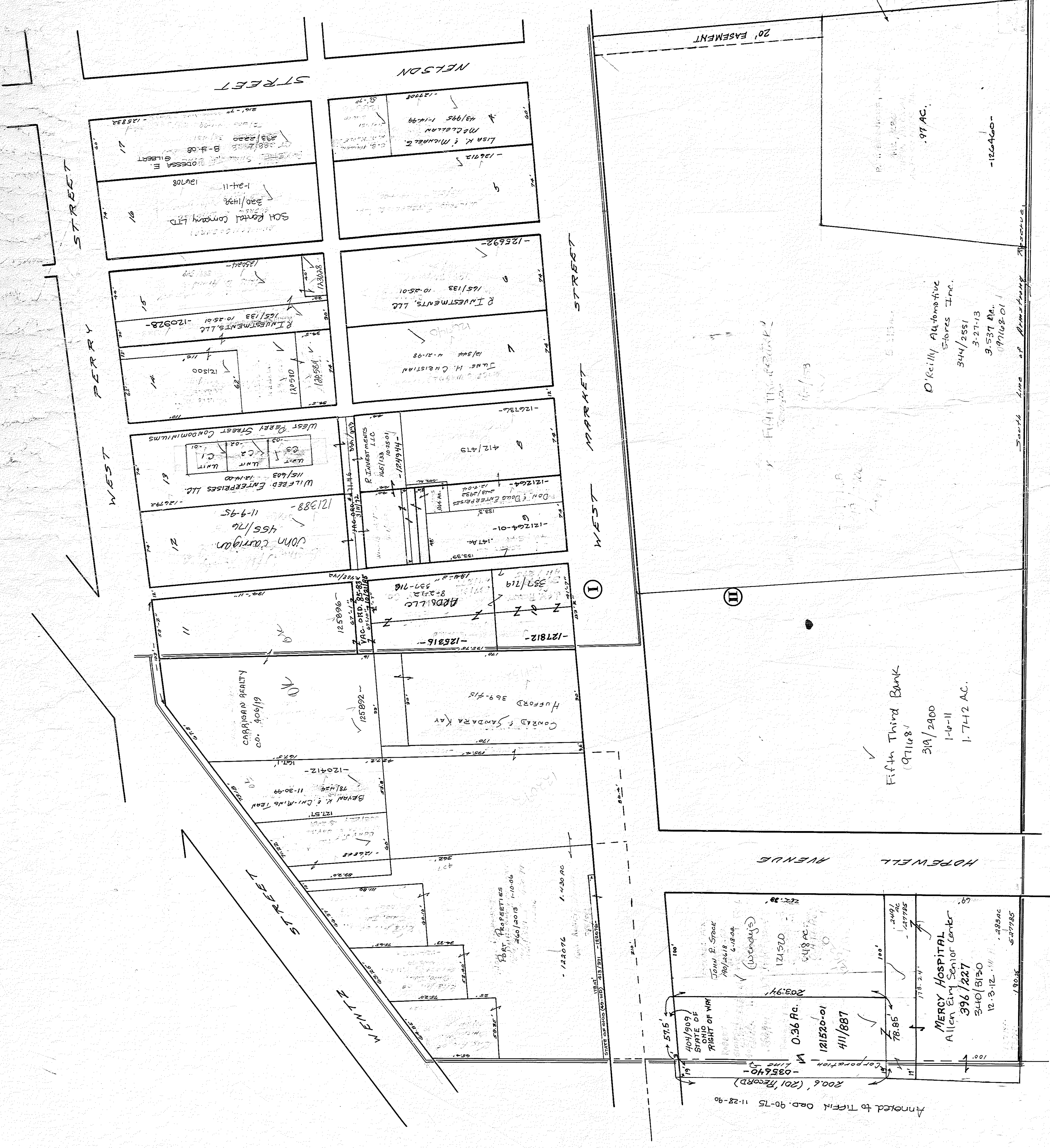
Scale: 1" = 60'

WENTZ ADDITION I val 2 pg 13  
ARMSTRONG RESERVE II

- Lot Boundary Line.
- Lot Division Line.
- Separates Different Subdivisions.

- West Perry Street Condominiums  
258/197 11/10/05
- C1 Lois C. WALLAND 282/68 8-2-07
- C2 REBECCA A. BUCKETT 282/1087 9-11-07
- C3 SUSAN M. KENDALL 303/3103 7-21-09

- TIFFIN MEDICAL ARTS CONDOMINIUMS  
SUITE A: PRASAD, CHANDRA KAKARAPATI 451/679 12/26/00
- " B: 12/26/00
- " C: K.C. MD. & J. GARLAPATI 415/1396 -12/16/00-4
- " D: 12/26/00
- " E: KRISHNAHARI C. Srinivathi MA 158/107 9/1/04
- " F: 12/26/00-05
- " G: 12/26/00-06
- SUITE B, D, F, G A.F.H., LLC 18/257 6/10/98



Annexed to Tiffin Ord. 90-75 11-28-90

2006 (201 Record)

401/809  
STATE OF OHIO (201)  
113/211 -125226-

Right of Way  
0.36 Ac.  
121520-01  
411/887

78.85

778.24

222.28

121520  
648 Ac.

78.85

121520  
648 Ac.

78.85

778.24

222.28

121520  
648 Ac.

78.85

778.24

222.28

121520  
648 Ac.

78.85

778.24

222.28

121520  
648 Ac.

78.85

778.24

222.28

121520  
648 Ac.

78.85

778.24

222.28

121520  
648 Ac.

78.85

778.24

222.28

121520  
648 Ac.

78.85

778.24

222.28

121520  
648 Ac.

78.85

778.24

222.28

121520  
648 Ac.

78.85

778.24

MERCY HOSPITAL  
Allen Emy Senior Center  
396/227  
340/8150  
12-3-12

Fifth Third Bank  
(971168)  
319/2900  
1-6-11  
1.7-12 AC.

O'Reilly Automotive  
Stores Inc.  
344/2551  
3-27-13  
3.537 Ac.  
(971168-01)

.97 AC.  
-126400-

South line of Remotely Approved